

MaxTester 720B Access OTDR

OPTIMIZED FOR ACCESS POINT-TO-POINT (P2P) CONSTRUCTION



Fully featured, entry-level, dedicated OTDR with tablet-inspired design perfect for everyday field-testing in any singlemode access network construction.

KEY FEATURES

Handy, lightweight, powerful, tablet-inspired design

7-inch, outdoor-enhanced touchscreen – the biggest in the handheld industry

12-hour autonomy

Dead zones: EDZ 0.8 m, ADZ 3.5 m

Dynamic range: 36/34 dB

Rugged design built for outside plant

iOLM-ready: intelligent and dynamic application that turns complex OTDR trace analysis into a one-touch task

APPLICATIONS

Access network construction

Private networks

Central office (CO) link certification

COMPLEMENTARY PRODUCTS AND OPTIONS



Fiber Inspection Probe
FIP-400B



Data Post-Processing Software
FastReporter 2



Soft Pulse Suppressor Bag
SPSB



THE HANDHELD OTDR... REINVENTED.

The MAX-700B series is the first tablet-inspired OTDR line that is handy, lightweight and rugged enough for any outside plant environment. With a 7-inch, outdoor-enhanced touchscreen—the most efficient handheld display in the industry—it delivers an unprecedented user experience. Its intuitive Windows-like GUI ensures a fast learning curve. Plus, its new and improved OTDR2.0 environment offers icon-based functions, instant boot-up, automatic macrobend finders as well as improved auto and real-time modes.

The Max-700B series is a line of genuine high-performance OTDRs from the world's leading manufacturer. It delivers EXFO's tried and true OTDR quality and accuracy along with the best optical performance for right-first-time results, every time.

The amazing 12-hour battery life will never let a technician down, and the plug-and-play hardware options, like the VFL, power meter and USB tools, make every technician's job easier.

Most importantly, the Max-700B series is finally bringing the iOLM, an intelligent OTDR-based application, to the handheld market. This advanced software turns even the most complex trace analysis into a simple, one-touch task.

Ultimately, the Max-700B series is small enough to fit in your hand and big enough to fit all your needs!

THE ENTRY-LEVEL SOLUTION DESIGNED FOR ALL YOUR TESTING NEEDS

The MAX-720B OTDR/iOLM features a dynamic range of 36 dB and 0.8-3.5 m dead zones. This ensures the efficient testing of closely spaced events, such as patchords and patch panels in COs. It is also optimized for the point-to-point testing of any access network.

Other models available :

- › MAX-715B Short Access and FTTx Last-Mile installation and troubleshooting (30 dB)
- › MAX-730B FTTH/PON installation and maintenance for testing through optical splitters and P2P metro (39 dB)

REMOVING THE COMPLEXITY FROM THE OTDR

iOLM | intelligent Optical Link Mapper

Launch multiple OTDR acquisitions



Analyze the traces



Compound the results



Display a schematic link view and prompt diagnosis



US patent 6,612,750

Using a unique and patented automated multipulse and multi-wavelength acquisition approach, the field-proven iOLM surpasses the traditional OTDR and linear view for expert-level link characterization of any fiber network.

This dynamic OTDR-based application uses EXFO's most advanced algorithms to deliver detailed information and maximum resolution on every element of the link. Thanks to its unmatched intelligence and simplicity, the iOLM converts complex OTDR tests into clear and accurate go/no-go results, through a single button operation.

- › Hardware optimized and intelligent software for maximum performance
- › Multiple acquisitions, multiple wavelengths with one button—all automated
- › Expert-level characterization results in a single, comprehensive report
- › The fastest and hassle-free way to perform full fiber characterization
- › No training required: self-setting device with clear go/no-go results
- › Minimized truck rolls, thanks to the smartest analysis, powered by Link-Aware™ technology

Powered by
LINK-AWARE™
TECHNOLOGY

Three ways to benefit from the iOLM:

OTDR combo (Oi code)

Run iOLM and OTDR applications on one unit

Upgrade

Add iOLM software option, even while in the field

iOLM only

Order a unit with the iOLM application only

OPTICAL PLUG AND PLAY OPTIONS:

The MaxTester features plug-and-play optical options that can be purchased whenever you need them, at the time of your order or later on. In either case, installation is a snap you can do it by your own, without any software update required.

OPTICAL POWER METER

A high-level power meter (GeX) that can measure up to 27 dBm, the highest in the industry. This is essential for HFC networks or high-power signals. If used with an auto-lambda/auto-switching compatible light source, the power meter automatically syncs on the same wavelength avoiding any risk of mismatched measurement.

- › Extensive range of connectors
- › Auto-Lambda and Auto-Switching
- › Offers measurement storage and reporting
- › Seven standard calibrated wavelengths

VISUAL FAULT LOCATOR (VFL)

The plug-and-play VFL easily identifies breaks, bends, faulty connectors and splices, in addition to other causes of signal loss. This basic, yet essential troubleshooting tool, should be part of every field technician's toolbox. Visually locating faults by creating a bright-red glow at the exact location of the fault on singlemode or multimode fibers, it can detect faults over distances of up to 5 km. (Available with the Optical Power Meter only)

FIBER CONNECTOR INSPECTION AND CERTIFICATION - THE ESSENTIAL FIRST STEP



Taking the time to properly inspect a fiber-optic cable can prevent a slew of problems down the line—saving you time, money and headaches.

FIP-430B | The First Fully Automated Fiber Inspection Probe for the Field

Housing a unique automatic focus adjustment system, the FIP-430B automates each operation in the connector endface inspection sequence, transforming this critical process into one quick and easy step, which can be performed by technicians of all skill levels.

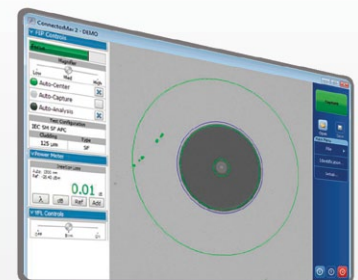
100%
Automated^a

1-step
process^a

57%
shorter test time^b

3 Models to fit your budget:

FEATURES	Basic FIP-410B	Semi-Automated FIP-420B	Fully-Automated FIP-430B
Three magnification levels	✓	✓	✓
Image capture	✓	✓	✓
Five-megapixel CMOS capturing device	✓	✓	✓
Automatic fiber image-centering function	✗	✓	✓
Automatic focus function	✗	✗	✓
On-board pass/fail analysis	✗	✓	✓
Pass/fail LED indicator	✗	✓	✓



ConnectMax2

Read the FIP-400B specification sheet or visit www.EXFO.com/keepthefocus for more information.

Notes

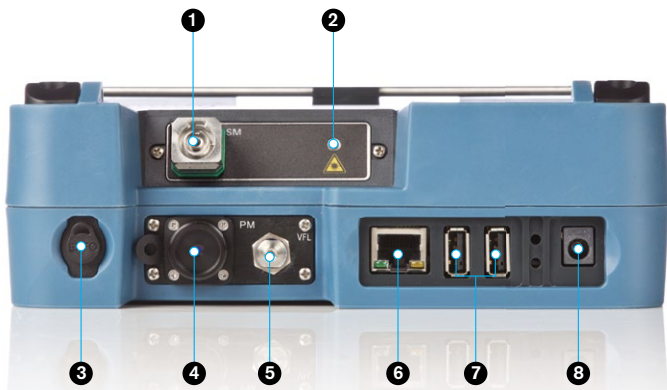
- a. Model FIP-430B only
- b. Data sourced from EXFO's case study, with calculation based on typical analysis time.

SOFTWARE UTILITIES

Software update	Ensure that your MaxTester is up-to-date with the latest software.
VNC configuration	The Virtual Network Computing utility allows technicians to easily remote control the unit via a computer or laptop.
Microsoft Internet Explorer	Access the Web directly from your device interface.
Data mover	Transfer all your daily test results quickly and easily.
Centralized documentation	Instant access to user guides and other relevant documents.
Wallpapers	Enhance your work environment with colorful and scenic backgrounds.
PDF Reader	View your reports in PDF format.
Bluetooth file sharing	Share files between your MaxTester and any Bluetooth-enabled device.
Wi-Fi connection	Upload test results and browse the internet.
Inspection probe	USB probe to inspect and analyze connectors.

PACKAGED FOR EFFICIENCY

- | | | |
|--------------------------------|--|------------------------------------|
| 1 Singlemode OTDR port | 6 10/100 Mbit/s Ethernet port | 11 Battery LED status |
| 2 Testing LED indicator | 7 Two USB 2.0 ports | 12 Built-in Wi-Fi/Bluetooth |
| 3 Stylus | 8 AC adapter | 13 Stand support |
| 4 Power meter | 9 Home/switch application and screen capture (hold) | |
| 5 Visual fault locator | 10 Power on/off/stand by | |



SPECIFICATIONS^a

TECHNICAL SPECIFICATIONS	MAXTESTER 720B
Display	7 in (178 mm) outdoor-enhanced touchscreen, 800 x 480 TFT
Interfaces	Two USB 2.0 ports RJ-45 LAN 10/100 Mbit/s
Storage	2 GB internal memory (20 000 OTDR traces, typical)
Batteries	Rechargeable lithium-polymer battery 12 hours of operation as per Telcordia (Bellcore) TR-NWT-001138
Power supply	Power supply AC/DC adapter, input 100-240 VAC, 50-60 Hz, 9-16 V DCIN 15 Watts minimum
Wavelength (nm) ^b	1310/1550
Dynamic range (dB) ^c	36/34
Event dead zone (m) ^d	0.8
Attenuation dead zone (m) ^e	3.5
Distance range (km)	0.1 to 260
Pulse width (ns)	5 to 20 000
Linearity (dB/dB)	±0.03
Loss threshold (dB)	0.01
Loss resolution (dB)	0.001
Sampling resolution (m)	0.04 to 5
Sampling points	Up to 256 000
Distance uncertainty (m) ^f	±(0.75 + 0.0025 % x distance + sampling resolution)
Measurement time	User-defined (60 min. maximum)
Reflectance accuracy (dB)	±2
Typical real-time refresh (Hz)	3
Laser safety	1M

Notes

- a. All specifications valid at 23 °C ± 2 °C with an FC/APC connector, unless otherwise specified.
- b. Typical.
- c. Typical dynamic range with longest pulse and three-minute averaging at SNR = 1.
- d. Typical, for reflectance below -55 dB, using a 5-ns pulse.
- e. Typical, for reflectance below -55 dB, using a 5-ns pulse. Attenuation dead zone at 1310 nm is 4.5 m typical with reflectance below -45 dB
- f. Does not include uncertainty due to fiber index.

GENERAL SPECIFICATIONS

Size (H x W x D)	200 mm x 155 mm x 68 mm (7 7/8 in x 6 1/8 in x 2 3/4 in)
Weight (with battery)	1.29 kg (2.8 lb)
Temperature	Operating: -10 °C to 50 °C (14 °F to 122 °F) Storage: -40 °C to 70 °C (-40 °F to 158 °F) ^a
Relative humidity	0 % to 95 % noncondensing

SOURCE (optional)

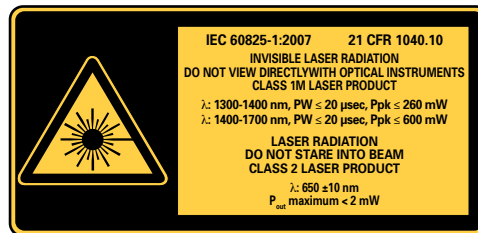
Output power (dBm) ^b	-6
Modulation	CW, 1 kHz, 2 kHz

BUILT-IN POWER METER SPECIFICATIONS (GeX) (optional) ^c

Calibrated wavelengths (nm)	850, 1300, 1310, 1490, 1550, 1625, 1650
Power range (dBm) ^d	27 to -50
Uncertainty (%) ^e	±5 % ± 10 nW
Display resolution (dB)	0.01 = max to -40 dBm 0.1 = -40 dBm to -50 dBm
Automatic offset nulling range ^{d,f}	Max power to -34 dBm
Tone detection (Hz)	270/330/1000/2000

VISUAL FAULT LOCATOR (VFL) (OPTIONAL)

Laser, 650 nm ± 10 nm
CW/Modulate 1 Hz
Typical P _{out} in 62.5/125 μm: > -1.5 dBm (0.7 mW)
Laser safety: Class 2

LASER SAFETY

CAUTION: VIEWING THE LASER OUTPUT WITH CERTAIN OPTICAL INSTRUMENTS (FOR EXAMPLE: EYE LOUPES, MAGNIFIERS AND MICROSCOPES) WITHIN A DISTANCE OF 100 MM MAY POSE AN EYE HAZARD.

ACCESSORIES

GP-10-072	Semi-rigid carrying case	GP-2016	10-foot RJ-45 LAN cable
GP-10-086	Rigid carrying case	GP-2144	USB 16G micro-drive
GP-302	USB mouse	GP-2155	Carry-on size backpack
GP-1008	VFL adapter (2.5 mm to 1.25 mm)	GP-2205	DC vehicle battery-charging adaptor (12 V)
GP-2001	USB keyboard	GP-2207	Stand support

Notes

- 20 °C to 60 °C (-4 °F to 140 °F) with the battery pack.
- Typical output power is given at 1550 nm.
- At 23 °C ± 1 °C, 1550 nm and FC connector. With modules in idle mode. Battery operated after 20-minute warm-up.
- Typical.
- At calibration conditions.
- For ±0.05 dB, from 10 °C to 30 °C.

ORDERING INFORMATION

MAX-720B-XX-XX-XX-XX-XX-XX-XX-XX-XX

Model

M1 = Access OTDR, 1310/1550 nm (9/125 µm)

OTDR software options

OTDR = Enables OTDR application only

iOLM = Enables the iOLM application only

Oi = Enables OTDR and iOLM applications

Connector

EA-EUI-28 = APC/DIN 47256

EA-EUI-89 = APC/FC narrow key

EA-EUI-91 = APC/SC

EA-EUI-95 = APC/E-2000

EA-EUI-98 = APC/LC

EI-connectors = See note below

Connectivity

00 = Without RF components

RF = With RF capability (Wi-Fi and Bluetooth)

Power meter

00 = Without power meter

PM2X = Power meter; GeX detector

VPM2X = VFL and power meter; GeX detector

Software options

00 = Without any software option

SRC = Source through OTDR port

Inspection probe base tips^a

APC = Includes FIPT-400-U25MA and FIPT-400-SC-APC

UPC = Includes FIPT-400-U25M and FIPT-400-FC-SC

Inspection probe model^bFP410B = Digital video inspection probe
Triple magnificationFP420B = Analysis digital video inspection probe
Automated pass/fail analysis
Triple magnification
AutocenteringFP430B = Automated analysis digital video inspection probe
Automated focus
Automated pass/fail analysis
Triple magnification
Autocentering**Connector adapter^c**

FOA-12 = Biconic

FOA-14 = NEC D4: PC, SPC, UPC

FOA-16 = SMA/905, SMA-906

FOA-22 = FC/PC, FC/SPC, FC/UPC, FC/APC

FOA-28 = DIN 47256, DIN 47256/APC

FOA-32 = ST: ST/PC, ST/SPC, ST/UPC

FOA-54 = SC: SC/PC, SC/SPC, SC/UPC, SC/APC

FOA-78 = Radiall EC

FOA-96B = E-2000/APC

FOA-98 = LC

FOA-99 = MU

Example: MAX-720B-M1-Oi-EA-EUI-91-RF-PM2X-FOA-22-FP420B-APC-SRC

Notes

- Available if inspection probe is selected.
- Includes ConnectorMax2 software.
- Available if power meter is selected.

EI CONNECTORS



To maximize the performance of your OTDR, EXFO recommends using APC connectors. These connectors generate lower reflectance, which is a critical parameter that affects performance, particularly in dead zones. APC connectors provide better performance than UPC connectors, thereby improving testing efficiency.

For best results, APC connectors are mandatory with the iOLM application.

Note: UPC connectors are also available. Simply replace EA-XX by EI-XX in the ordering part number. Additional connectors available are the EI-EUI-76 (UPC/HMS-10/AG) and EI-EUI-90 (UPC/ST).

EXFO Headquarters > Tel.: +1 418 683-0211 | Toll-free: +1 800 663-3936 (USA and Canada) | Fax: +1 418 683-2170 | info@EXFO.com | www.EXFO.com

EXFO serves over 2000 customers in more than 100 countries. To find your local office contact details, please go to www.EXFO.com/contact.

EXFO is certified ISO 9001 and attests to the quality of these products. EXFO has made every effort to ensure that the information contained in this specification sheet is accurate. However, we accept no responsibility for any errors or omissions, and we reserve the right to modify design, characteristics and products at any time without obligation. Units of measurement in this document conform to SI standards and practices. In addition, all of EXFO's manufactured products are compliant with the European Union's WEEE directive. For more information, please visit www.EXFO.com/recycle. **Contact EXFO for prices and availability or to obtain the phone number of your local EXFO distributor.**

For the most recent version of this spec sheet, please go to the EXFO website at www.EXFO.com/specs.

In case of discrepancy, the Web version takes precedence over any printed literature.

Keep this document for future reference.